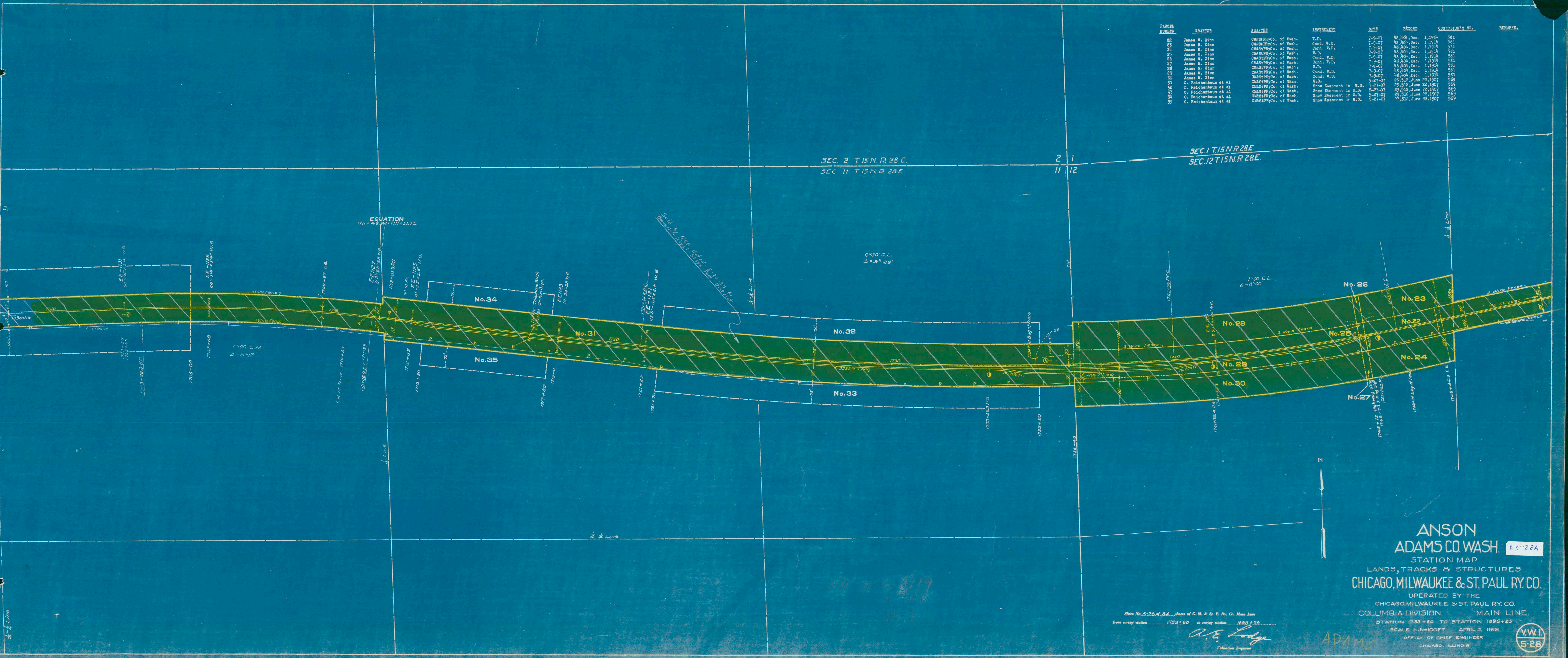


PARCEL NUMBER	GRANTOR	GRANTEE	TESTIMONY	DATE	RECORD	ORDINARY NO.	REMARKS
22	James W. Zinn	CM&STPRYCo. of Wash.	W.D.	7-9-07	46,404, Dec.	1,1914	561
24	James W. Zinn	CM&STPRYCo. of Wash.	Cond. W.D.	7-9-07	46,404, Dec.	1,1914	561
25	James W. Zinn	CM&STPRYCo. of Wash.	W.D.	7-9-07	46,404, Dec.	1,1914	561
26	James W. Zinn	CM&STPRYCo. of Wash.	Cond. W.D.	7-9-07	46,404, Dec.	1,1914	561
27	James W. Zinn	CM&STPRYCo. of Wash.	W.D.	7-9-07	46,404, Dec.	1,1914	561
28	James W. Zinn	CM&STPRYCo. of Wash.	Cond. W.D.	7-9-07	46,404, Dec.	1,1914	561
29	James W. Zinn	CM&STPRYCo. of Wash.	W.D.	7-9-07	46,404, Dec.	1,1914	561
30	James W. Zinn	CM&STPRYCo. of Wash.	Cond. W.D.	7-9-07	46,404, Dec.	1,1914	561
31	O. Reichenbaum et al	CM&STPRYCo. of Wash.	W.D.	5-8-07	23,512, June 22, 1907	569	
32	O. Reichenbaum et al	CM&STPRYCo. of Wash.	Snow Easement in W.D.	5-8-07	23,512, June 22, 1907	569	
33	O. Reichenbaum et al	CM&STPRYCo. of Wash.	Snow Easement in W.D.	5-8-07	23,512, June 22, 1907	569	
34	O. Reichenbaum et al	CM&STPRYCo. of Wash.	Snow Easement in W.D.	5-8-07	23,512, June 22, 1907	569	
35	O. Reichenbaum et al	CM&STPRYCo. of Wash.	Snow Easement in W.D.	5-8-07	23,512, June 22, 1907	569	



ANSON ADAMS CO. WASH. R.S. 28A
 STATION MAP
 LANDS, TRACKS & STRUCTURES
CHICAGO, MILWAUKEE & ST. PAUL RY. CO.
 OPERATED BY THE
 CHICAGO, MILWAUKEE & ST. PAUL RY. CO.
 COLUMBIA DIVISION, MAIN LINE.
 STATION 1753+60 TO STATION 1699+25
 SCALE 1"=100 FT. APRIL 3, 1916
 OFFICE OF CHIEF ENGINEER
 CHICAGO, ILLINOIS.

Sheet No. 28 of 34 Sheets of C. M. & St. P. Ry. Co. Main Line
 from survey station 1753+60 to survey station 1699+25
 A.E. Lodge
 Valuation Engineer



ADAMS